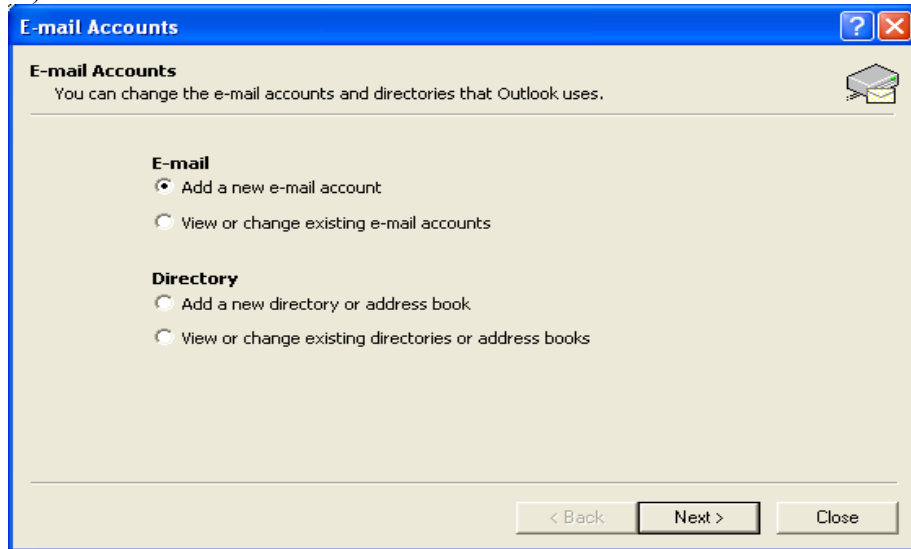
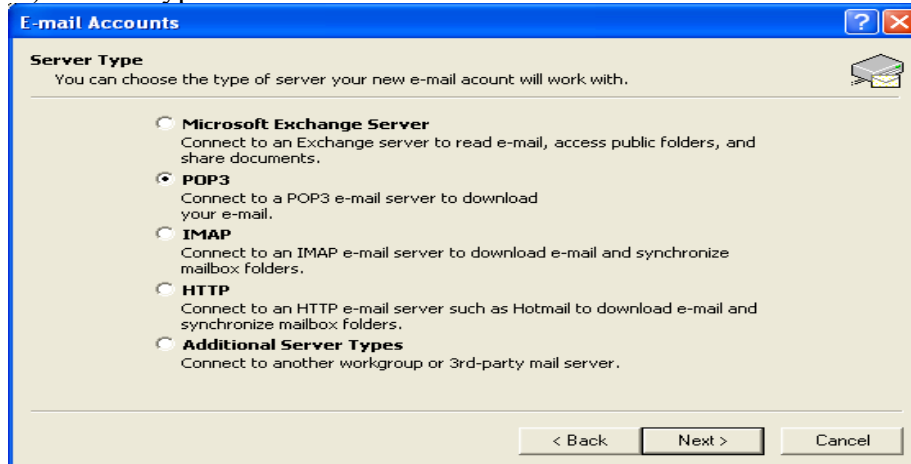


Create email account and set SMTP Authentication in Microsoft Outlook:

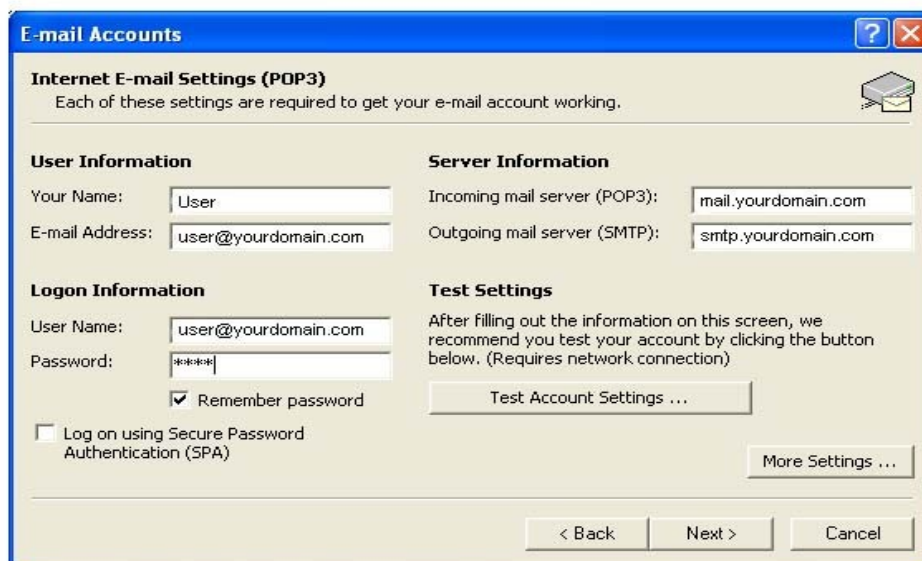
1.) Click 'Tool' => 'Email Account' => 'Add a new e-mail account'



2.) Server Type 'POP3'



3.) Put your email account as User Name as below example show. Incoming and Outgoing setting given by us with the account information.



4.) Click ' **More Settings ...** ' => **Outgoing Server** => Check ' **My outgoing server requires authentication** ' => Check ' **Use same settings as my incoming mail server** ' OR ' **Log on using** ' your email account logon info '.



5.) OK. Done.