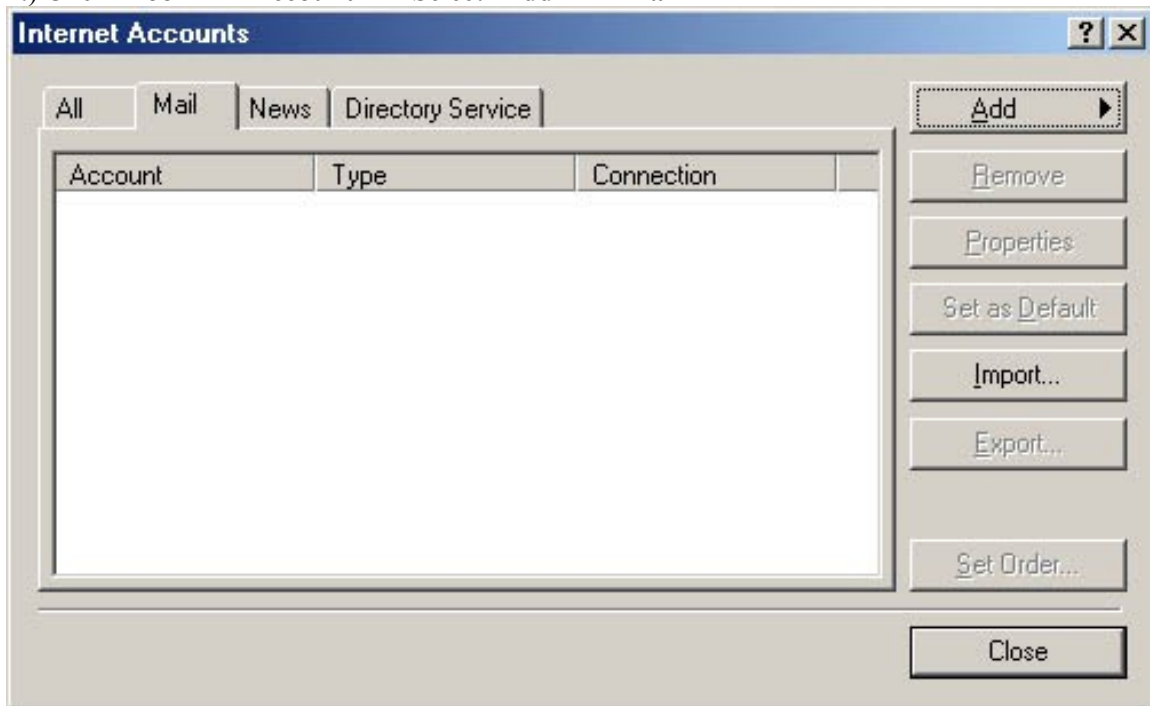
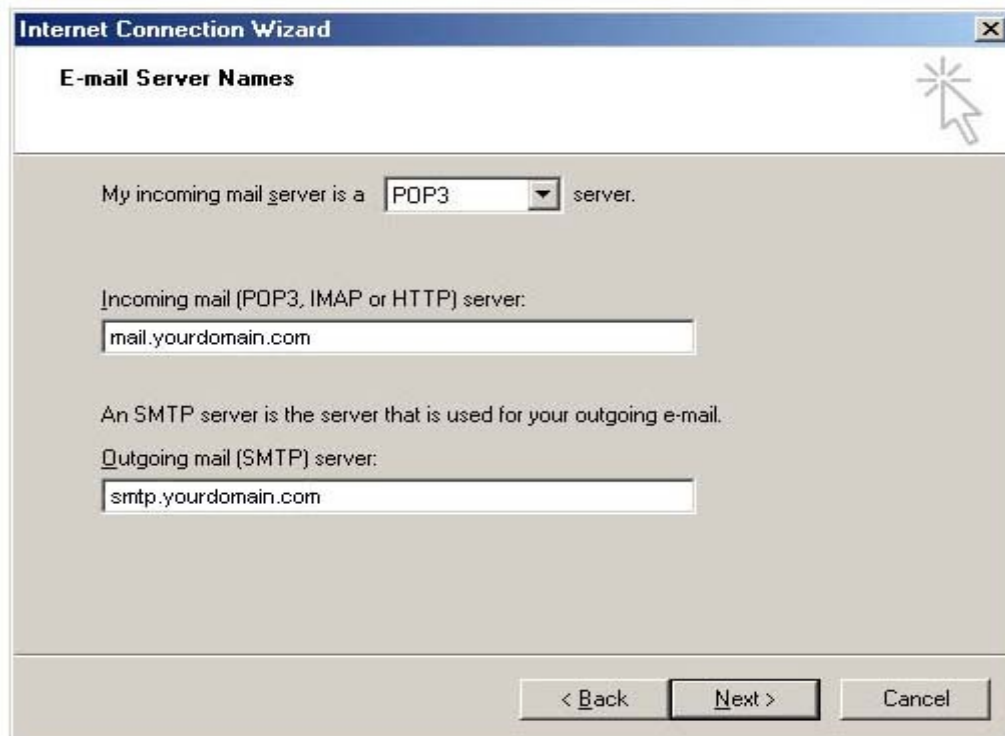


Setup new email account in Outlook Express:

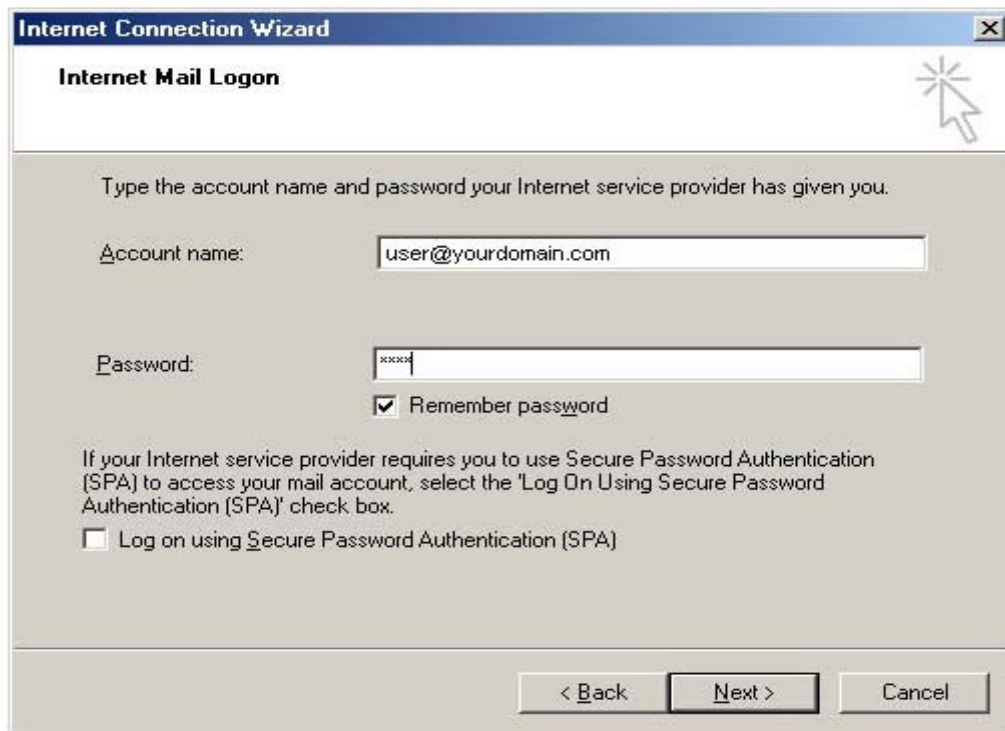
1.) Click 'Tool' => 'Account' => Select 'Add' => 'Mail'



2.) Type in 'Display Name' and 'Email Address' => Set incoming and outgoing mail (using the provided login information in the email).

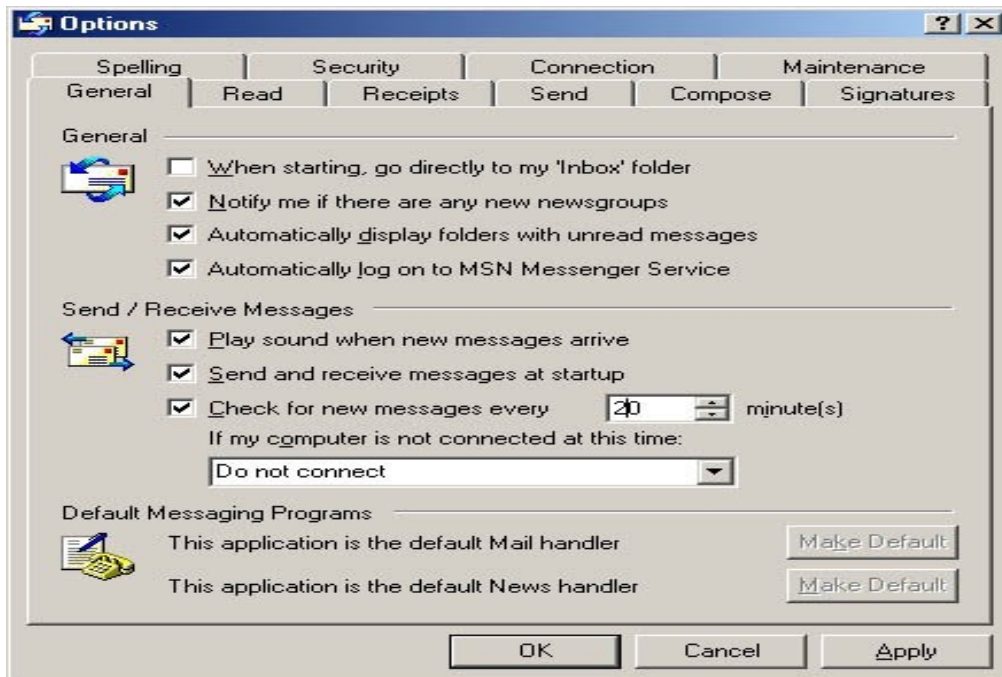


3.) Set the 'Account Name' as your email account (NOT your username only) and correct password. Refer the example below:



The screenshot shows the 'Internet Connection Wizard' dialog box, specifically the 'Internet Mail Logon' step. The window title is 'Internet Connection Wizard' and the subtitle is 'Internet Mail Logon'. The main text reads: 'Type the account name and password your Internet service provider has given you.' There are two input fields: 'Account name:' with the text 'user@yourdomain.com' and 'Password:' with 'xxxx'. A checkbox labeled 'Remember password' is checked. Below this, there is a note: 'If your Internet service provider requires you to use Secure Password Authentication (SPA) to access your mail account, select the 'Log On Using Secure Password Authentication (SPA)' check box.' A checkbox for 'Log on using Secure Password Authentication (SPA)' is unchecked. At the bottom, there are three buttons: '< Back', 'Next >', and 'Cancel'.

4.) After successful to create email account, set auto check mails every 20 minutes and check on startup. Refer to below attachment. Click 'Tool' again => 'Option' => 'General'



The screenshot shows the 'Options' dialog box with the 'General' tab selected. The window title is 'Options'. The tabs at the top are 'Spelling', 'Security', 'Connection', and 'Maintenance'. The sub-tabs are 'General', 'Read', 'Receipts', 'Send', 'Compose', and 'Signatures'. The 'General' section contains several checkboxes: 'When starting, go directly to my 'Inbox' folder' (unchecked), 'Notify me if there are any new newsgroups' (checked), 'Automatically display folders with unread messages' (checked), and 'Automatically log on to MSN Messenger Service' (checked). The 'Send / Receive Messages' section has 'Play sound when new messages arrive' (checked), 'Send and receive messages at startup' (checked), and 'Check for new messages every' set to '20' minutes. Below this, a dropdown menu is set to 'Do not connect'. The 'Default Messaging Programs' section has two 'Make Default' buttons for 'Mail handler' and 'News handler'.

5.) Click 'Tool' => 'Account' => 'Mail' => 'Properties' => 'Servers' => Check 'My server requires authentication' => 'Setting'

6.) Choose 'Use same settings as my incoming mail server' or either 'Log on Account name is 'your email account' and password for the email account'. Done.